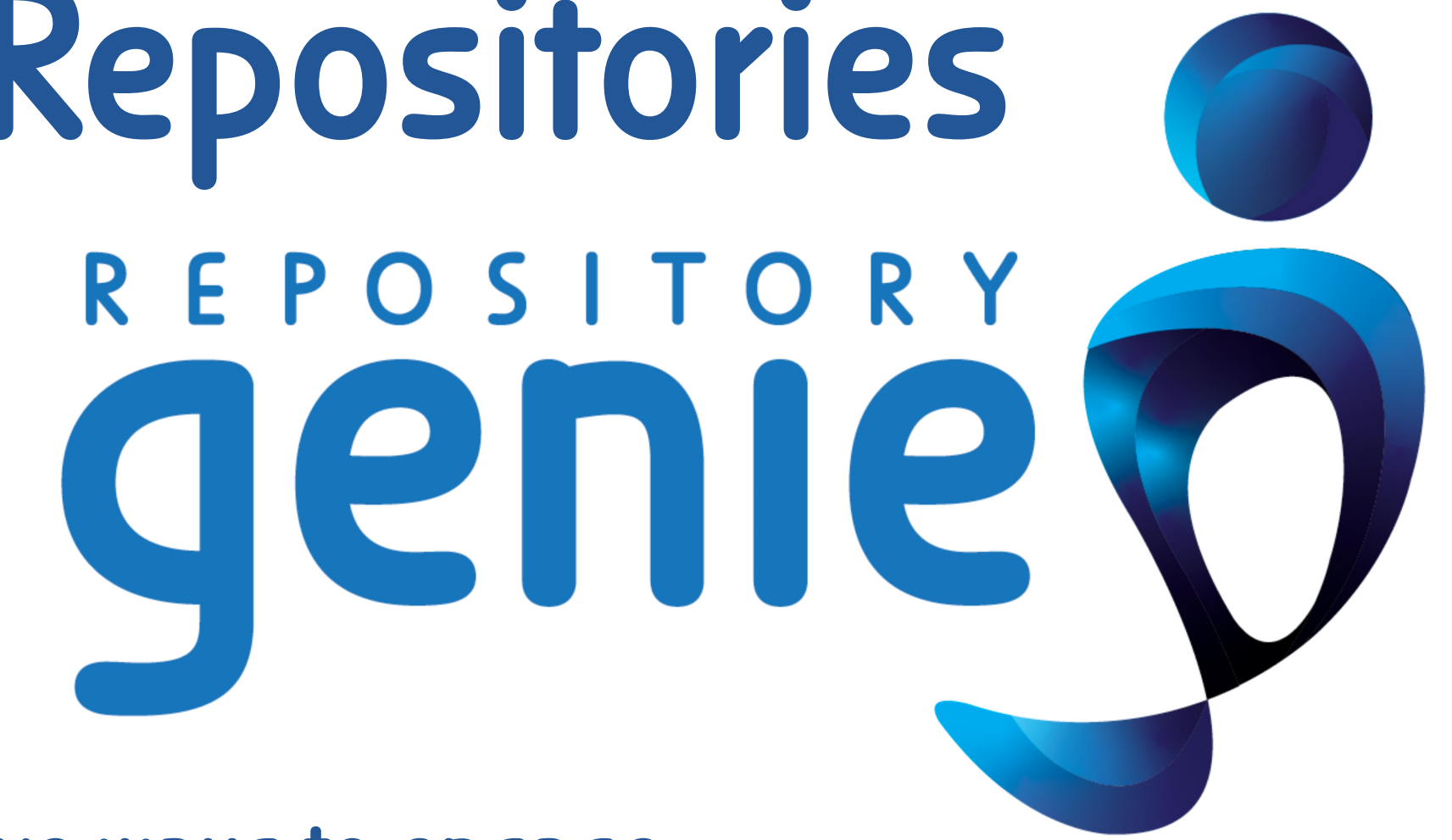
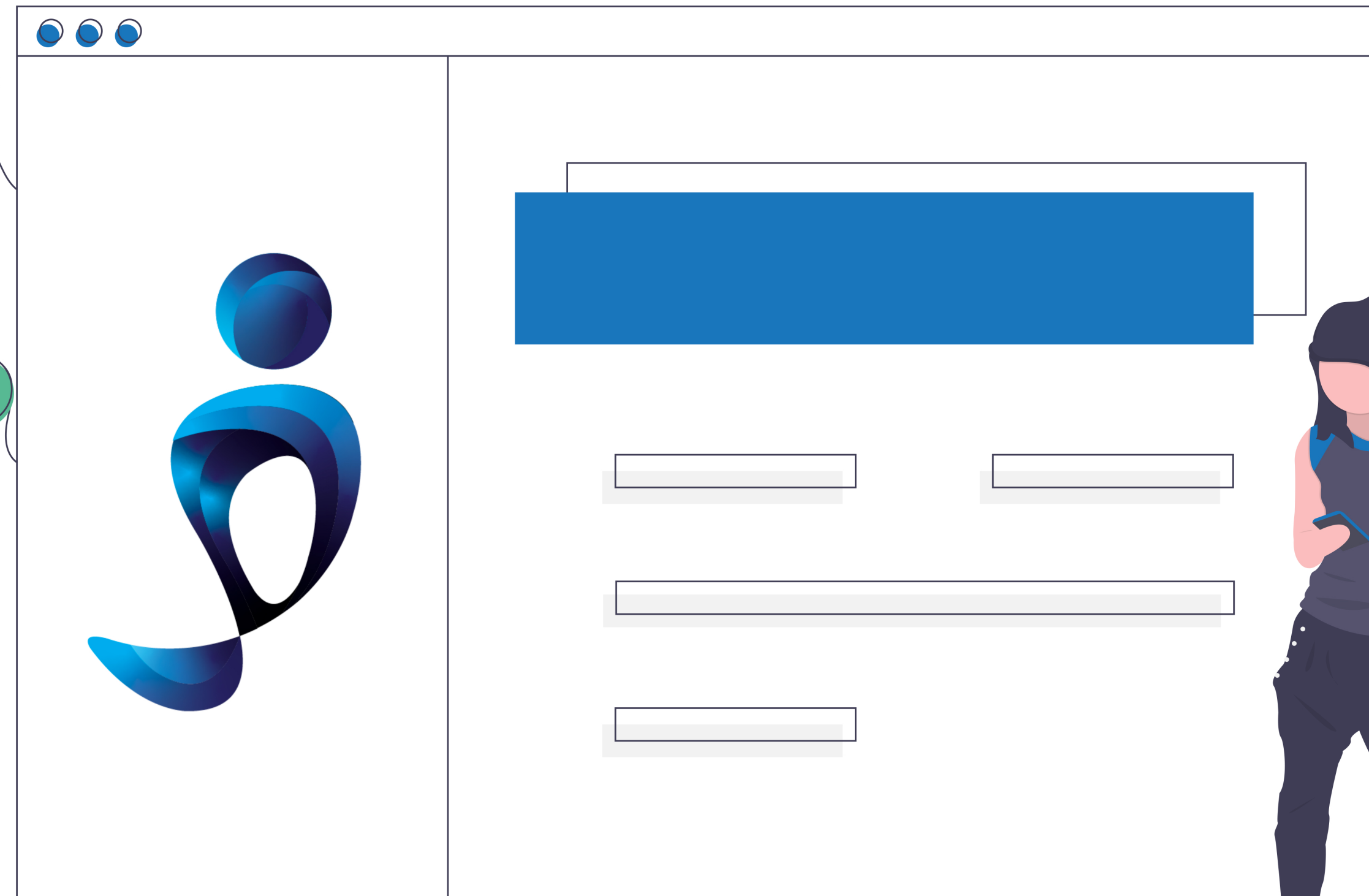
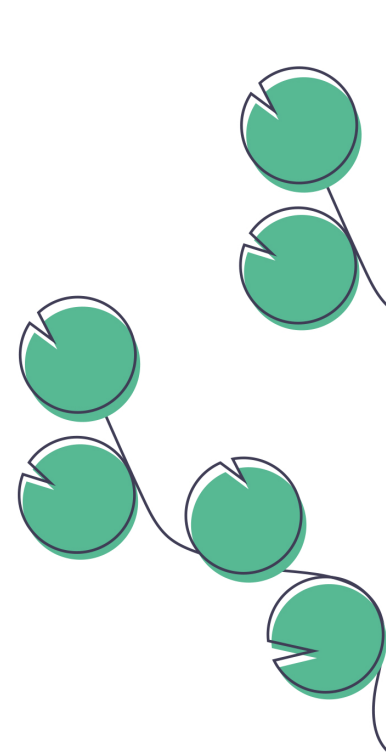
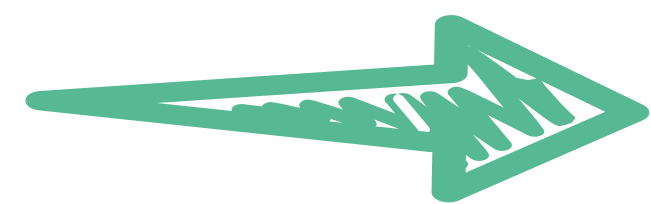
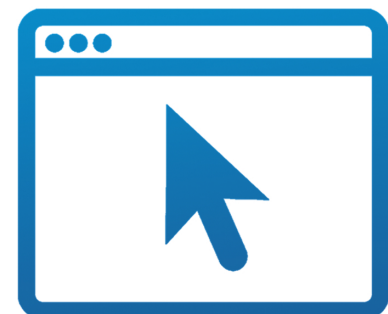
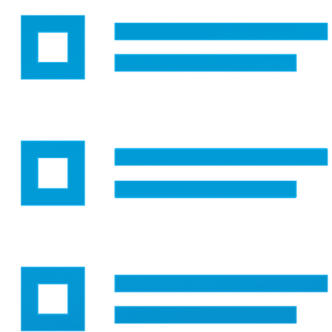
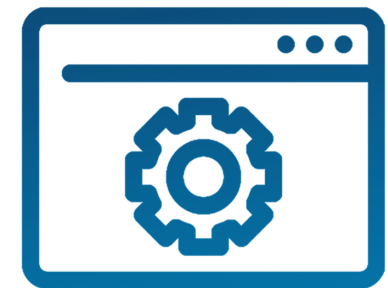


# Supporting Researchers in the Discovery of Data Repositories

Amber E Budden and Erin McLean



Collating existing expertise,  
tools, resources, catalogs  
and websites



Fun, creative ways to engage



Data repositories  
like \_\_\_\_\_.

Cards Against Data & M... PICK 1

What helps  
researchers  
unwind? \_\_\_\_\_.

Cards Against Data & M... PICK 1

Completely  
unwarranted  
confidence.

Cards Against Data & Metadata

Having spaces in  
your filename  
(Often causes your  
code to have  
problems).

Cards Against Data & Metadata

Centralised resource, written for researchers



Are there existing data preservation requirements  
from your funding agency or institution?



If you don't know or are unsure, a good place to find  
an answer would be your data librarian



What norms exist in your discipline? Where would  
YOU go to look for data?

[zenodo.org/record/1475430#.X\\_2XEi2ZN25](https://zenodo.org/record/1475430#.X_2XEi2ZN25)



Logo preference?



This work has been supported through a Funding Friday award from ESIP with support from the National Aeronautics and Space Administration (NASA), National Oceanic and Atmospheric Administration (NOAA) and the United States Geological Survey (USGS).

To play:

The card deck is held at [decks.rereadgames.com](https://decks.rereadgames.com), code 179JR. To play online, visit [md.rereadgames.com](https://md.rereadgames.com), select many decks as your source and enter the code. Invite your friends to join with your game code.

To contribute:

[github.com/DataONEorg/RepositoryFinder](https://github.com/DataONEorg/RepositoryFinder)